

# MRPLAYER

## Function Description:

Function	AVI	HDD	SDF	Setting	Export
Description	Open DVR backup file (AVI file)	Open hard drive video	Open SD card video file (SDF file)	Setting function	Export images to AVI files

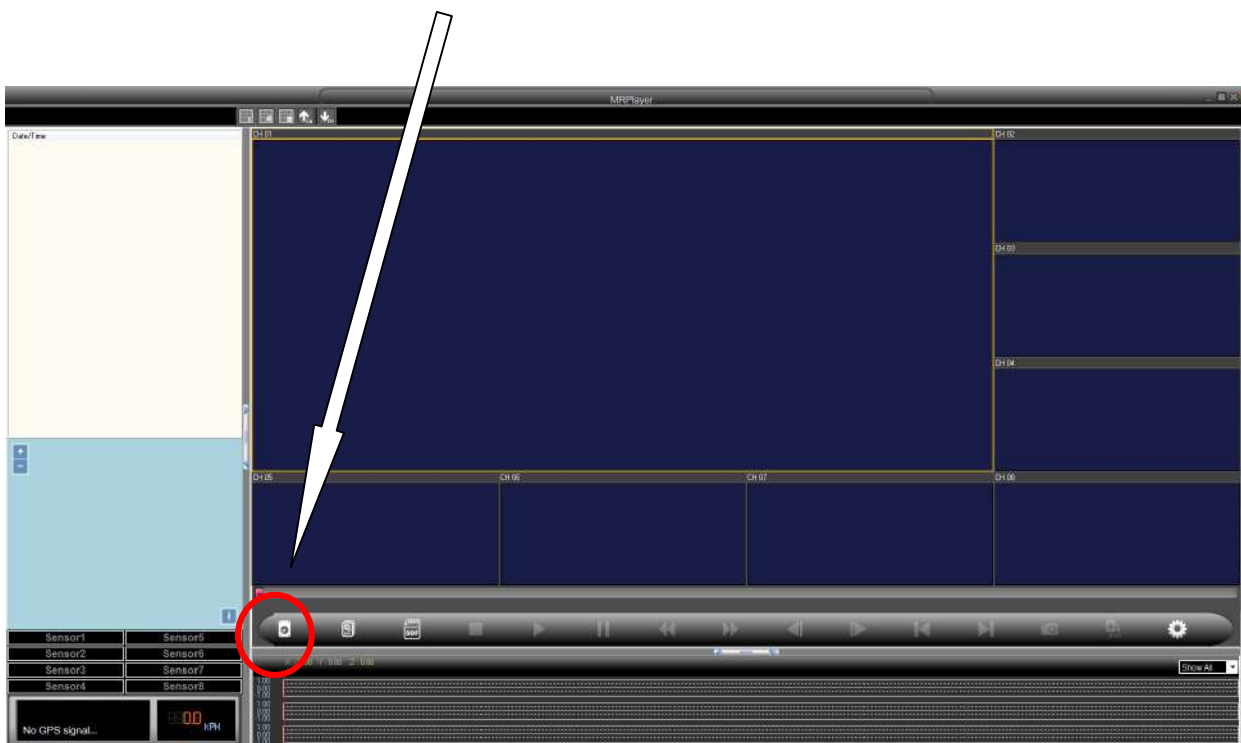
## MRPlayer 2.1

### ① Sign in MRPlayer 2.1

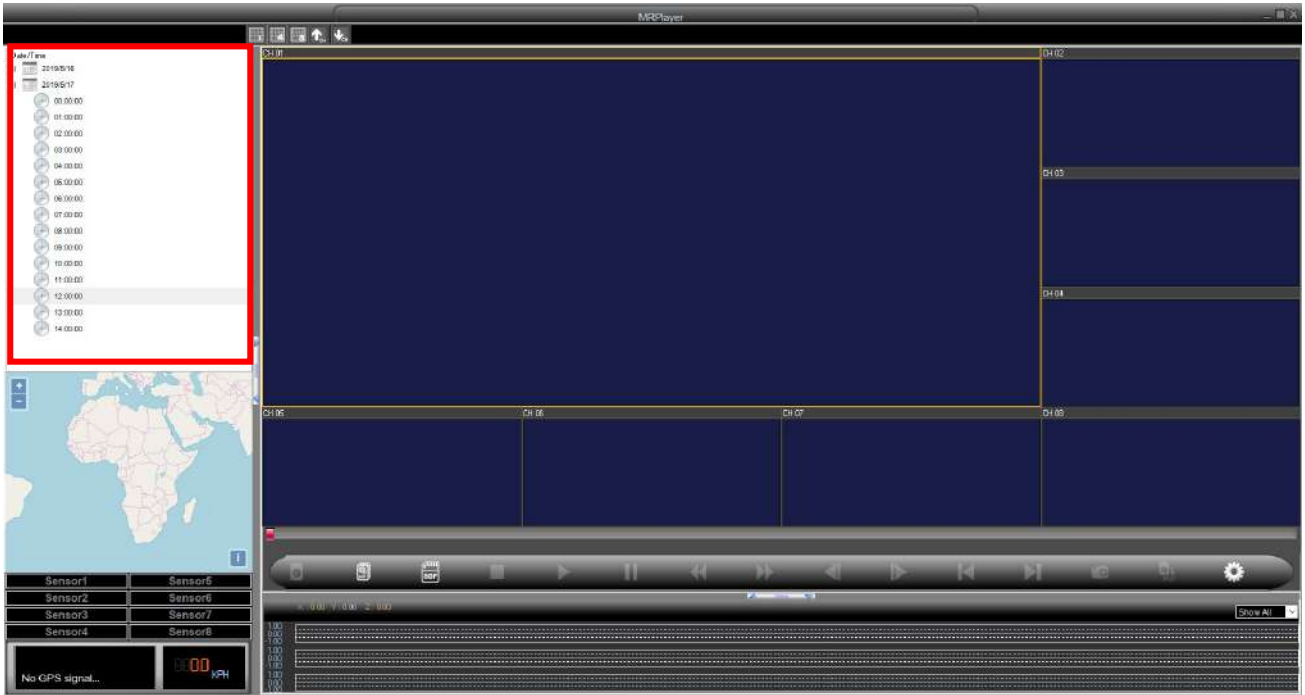


Default Account : admin  
Default Password : 1111

### ② Execute the playback software and choose to open the hard drive image.

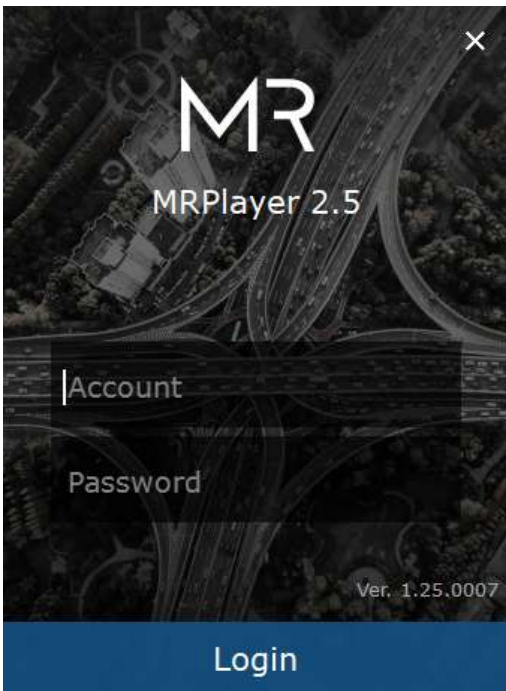


### ③ Select view date file



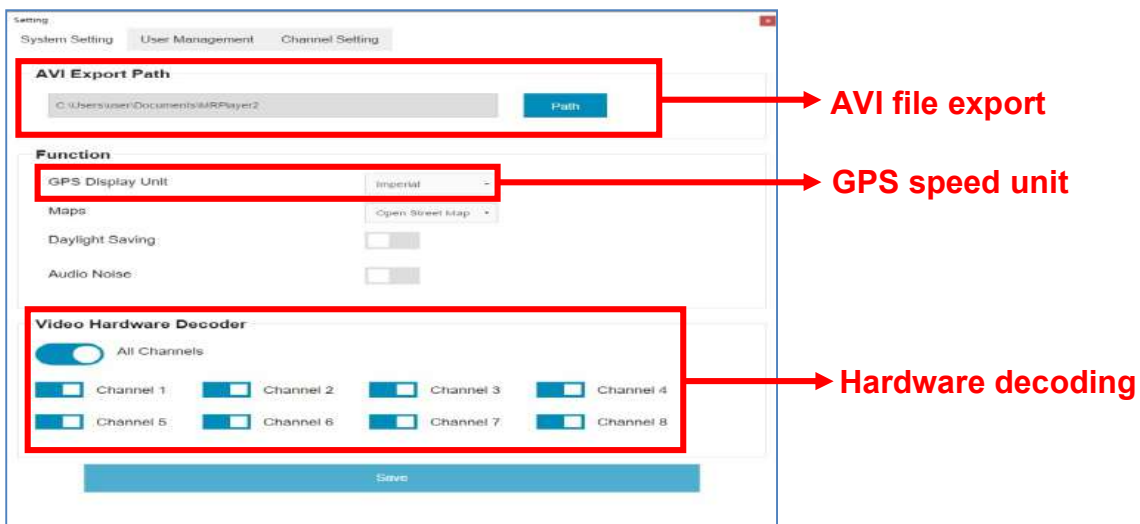
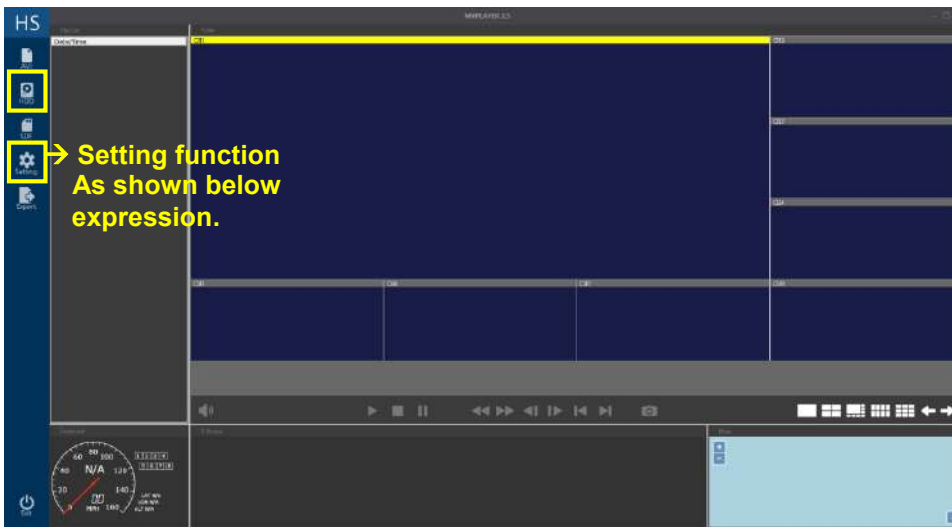
## (2) MRPlayer 2.5

### ① 登入MRPlayer 2.5



Default Account : admin  
Default Password : 1111

② Open HDD/SSD and also can configure Setting.



③ Select the date what you want to review

